

LEVER DAYLON ROUND OR SQUARE ROSE



AVAILABLE FUNCTIONS ROUND ROSE:



Passage



Privacy



Inactive

AVAILABLE FUNCTIONS SQUARE ROSE:



Passage



Privacy



Entry

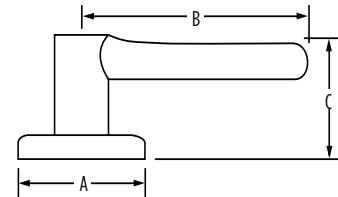


Inactive

Dimensions	A	B	C
	2 9/16"	3 5/8"	2 3/8"

SPECIFICATIONS

Door Prep	Cross Bore 2-1/8" Edge Bore 1" Latch Face 1"x2-1/4"
Backset	Adjustable to 2-3/8" or 2-3/4"
Door Thickness	1-3/8"-1-3/4" doors standard thickness
Cylinder	P&T(5 pin).
Faceplates	1"x2-1/4" Must specify square radius or drive-in
Strikes	2-1/4" full lip. Specify round corner or square corner
Bolt	1/2" throw. Nickel plated
Door Handing	Reversible for right or left-handed doors
ANSI/BHMA	A156.5 Grade 3
ADA	N/A
UL	Meets UL 3 hour fire rating for all UL functions
ASTM	All Weiser product meets ASTM E 331 water penetration testing



SATIN
NICKEL



SATIN
CHROME



MATTE
BLACK



20 min.



3 Hour

