

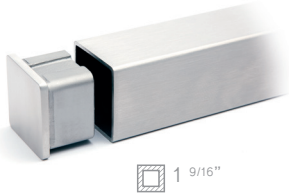
STAINLESS STEEL HANDRAILS



All stainless steel products are available painted.

HANDRAIL

EMC 156 End cap (Sold separately)



1 9/16"

MCC 156

- Maximum length: 236 1/2". Can be pre-cut
- Pre-drilling the handrail with a #16 drill bit is required



EMC 156

- End cap for MCC 156

EMC 200 End cap (Sold separately)



2"

MCC 200

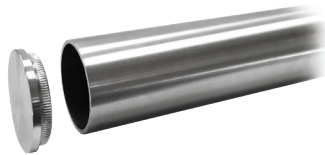
- Available in painted steel only
- Maximum length: 236 1/2". Can be pre-cut
- Pre-drilling the handrail with a #16 drill bit is required



EMC 200

- End cap for MCC 200

EMR 168 End cap (Sold separately)



MCR 168

- Maximum length: 236 1/2". Can be pre-cut
- Pre-drilling the handrail with a #16 drill bit is required



EMR 168

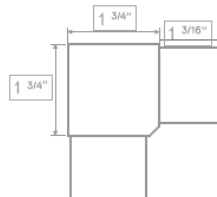
- End cap for MCR 168

CONNECTORS



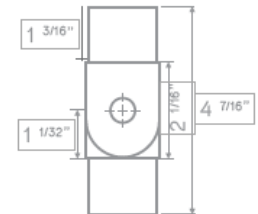
JMC 156CS SS

- Use with handrail MCC 156



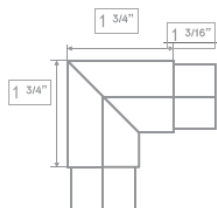
JMC 156ES SS

- Use with handrail MCC 156



JMR 168CS SS

- Use with handrail MCR 168



JMR 168ES SS

- Use with handrail MCR 168

